

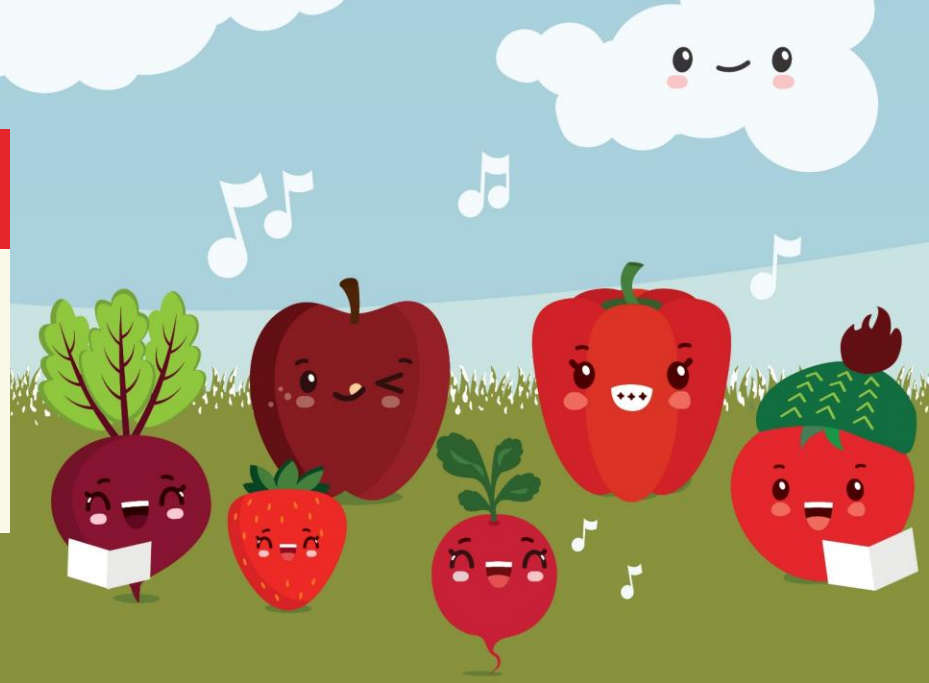
# BONNIE MCBETH DECEMBER 2024

All students qualify for a Breakfast Meal and Lunch Meal Free of Charge.

1% White Milk offered with all breakfast and lunch meals.



ACE'S CORNER



| MONDAY   | TUESDAY   | WEDNESDAY  | THURSDAY   | FRIDAY  |
|--|---|--|--|---|
| Graham Crackers 2<br>Peach Applesauce<br><hr/> Graham Crackers<br>Sun Butter<br>Baby Carrots<br>Peach Applesauce                               | Cheddar Goldfish 3<br>Cinnamon Applesauce<br><hr/> Cheddar Goldfish<br>Hard Boiled Egg<br>Cheese Cubes<br>Celery Sticks<br>Cinnamon Applesauce  | Corn Chex Cereal Bowl 4<br>Craisins<br><hr/> Corn Chex Cereal Bowl<br>Yogurt<br>String Cheese<br>Cauliflower<br>Craisins | MYO Mozzarella Pizza Bagel 5<br>Bagel<br>Banana<br><hr/> MYO Mozzarella Pizza Bagel<br>Cucumber Slices<br>Banana     | Double Chocolate Chip Muffin 6<br>Applesauce<br><hr/> Double Chocolate Chip Muffin<br>String Cheese (2)<br>Baby Carrots<br>Applesauce |
| Bagel w/ Cream Cheese 9<br>Cinnamon Applesauce<br><hr/> Bagel w/ Cream Cheese<br>Cheese Cubes<br>Yogurt<br>Baby Carrots<br>Cinnamon Applesauce | Cheddar Goldfish 10<br>Mixed Berry Applesauce<br><hr/> Cheddar Goldfish<br>Yogurt<br>Hard Boiled Egg<br>Celery Sticks<br>Mixed Berry Applesauce | Cheerios Cereal Bowl 11<br>Craisins<br><hr/> Cheerios Cereal Bowl<br>String Cheese (2)<br>Cauliflower<br>Craisins        | Graham Crackers 12<br>Banana<br><hr/> Graham Crackers<br>Sun Butter<br>Cucumber Slices<br>Banana                     | Yogurt 13<br>Applesauce<br><hr/> Yogurt<br>Cheese Cubes<br>Soft Pretzel Rod<br>Baby Carrots<br>Applesauce                             |
| Pretzel Goldfish 16<br>Mixed Berry Applesauce<br><hr/> Pretzel Goldfish<br>Sun Butter<br>Baby Carrots<br>Mixed Berry Applesauce                | Banana Muffin 17<br>Cinnamon Applesauce<br><hr/> Banana Muffin<br>String Cheese (2)<br>Celery Sticks<br>Cinnamon Applesauce                     | Cheerios Cereal Bowl 18<br>Craisins<br><hr/> Cheerios Cereal Bowl<br>Hard Boiled Egg<br>Cauliflower<br>Craisins          | Half Turkey and Cheese 19<br>Sandwich<br>Banana<br><hr/> Half Turkey and Cheese Sandwich<br>Fresh Broccoli<br>Banana | 20  |
| Winter Break 23  | Winter Break 24   | Winter Break 25  | Winter Break 26  | Winter Break 27   |
| Winter Break 30  | 31  |  |  | <p><b>Now Hiring! Work while kids are in school.</b><br/>                     Please call 815-763-6724.</p>                           |